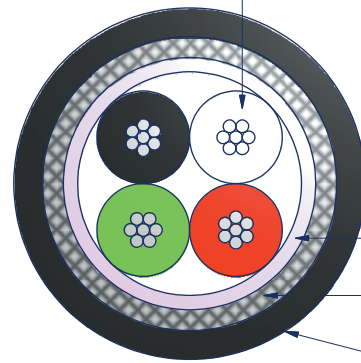
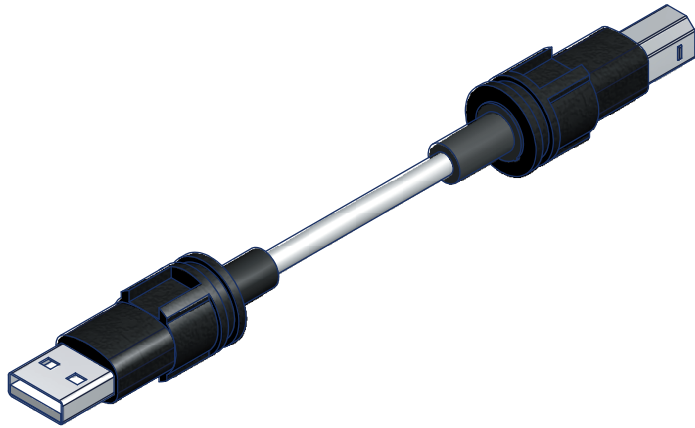




3RD ANGLE PROJECTION



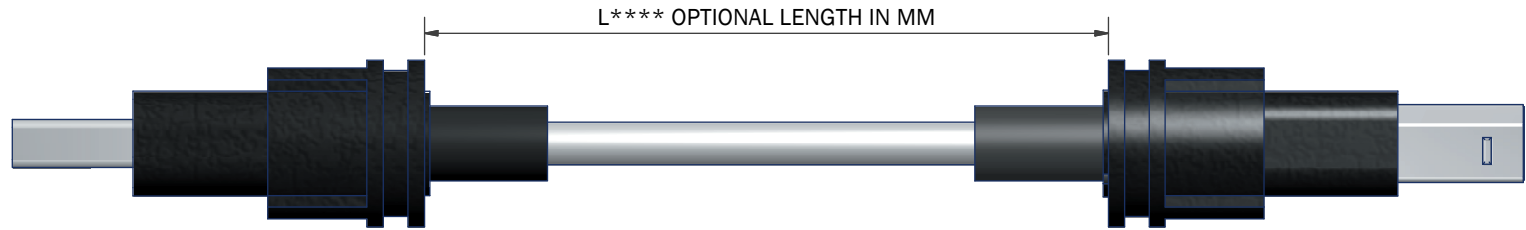
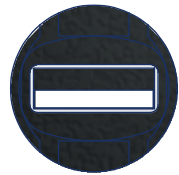
REMOVE ALL SHARP EDGES AND BURRS



- 4 STRANDED TINNED COPPER WIRES 7 x 0,13
Ø0,39MM (AWG 28)
- INSULATION OUTER Ø1,00
- WALL THICKNESS 0,3MM APPROX
- PAIR L12Y 2 x 0,09/1,0 VZN
- INSULATION OF POLYETHYLENE (PE)
- WIRE LIY 0,09/1.0 VZN
- INSULATION POLYVINYLCHLORIDE (PVC)
- ALULAMINATE FOIL OVERLAPPED
- SHIELD BRAIDING OF TINNED COPPER WIRES
- JACKET
- OUTER - Ø4,2 ±0,2MM
- WALL THICKNESS 0,6MM APPROX
- POLYURETHANE (PUR) GY RAL7021

CABLE SPECIFICATION

- JACKET: PUR
- MIN BEND RAD: REPEATED 7xØ, SINGLE 5xØ
- OPERATING TEMP: -25°C TO +85°C
- COLOUR: GREY RAL 7021
- OPERATING VOLTAGE(PEAK): ≤ 100 V
- CONDUCTOR RESISTANCE: ≤ 210 Ohm/Km
- INSULATION RESISTANCE: ≥ 20 MOhm*Km
- TEST VOLTAGE: 1000V / 50Hz FOR 1 MIN
- FLAME RESISTANCE: UL-STYLE 20963 B
- CABLE DIAMETER: 4,2MM ±0,2



EXAMPLE PART NUMBER: PC4D0011C-A-B-L2000	
PC4D0011C =	POLAMCO SERIES
A =	A = USB A
B =	B = USB B
L2000 =	PATCH LEAD LENGTH IN MM (1, 2, 3 AND 5 METRE OPTIONS)

ISSUE	DCR NO.	DATE	APPROVED	MATERIAL	UNLESS OTHERWISE SPECIFIED ALL DIMENSIONS IN MILLIMETRES TOLERANCE ON DIMENSIONS +/-0.1MM TOLERANCE ON ANGLES +/- 1 DEGREE	DO NOT SCALE THIS DRAWING	POLAMCO LTD	WESTON LOCK LOWER BRISTOL ROAD BATH BA2 1EP	PART NO
2	3994	22/09/2010	MP						PC4D0011C- *- *L ****
						THIS DRAWING IS COPYRIGHT, AND THE PROPERTY OF POLAMCO LTD. IT MUST NOT BE COPIED, USED FOR MANUFACTURE OR OTHERWISE DISCLOSED WITHOUT PRIOR WRITTEN CONSENT OF THE COMPANY.	TITLE		ASSY USED ON
					WEIGHT		OVERMOULDED USB CABLE		DRAWING NO
				DRAWN	M.PAUL				C4075