

TABLE 1

PART NUMBER	OUTSIDE DIA (MM)	INSIDE DIA (MM)	MIN BEND RADIUS (MM)	REEL LENGTH (M)
100P2589O-N6S-13-XX	15,0	9,6	25	50
100P2589O-N6S-16-XX	17,8	11,8	35	10 / 25 / 50
100P2589O-N6S-21-XX	23,2	16,5	45	10 / 25 / 50
100P2589O-N6S-28-XX	30,5	21,7	50	10 / 25 / 50
100P2589O-N6S-34-XX	36,5	27,7	60	10 / 25 / 50
100P2589O-N6S-42-XX	44,5	35,2	65	10 / 25
100P2589O-N11S-13-XX	15,0	9,9	25	50
100P2589O-N11S-16-XX	17,8	11,7	30	50
100P2589O-N11S-21-XX	23,2	16,6	35	50
100P2589O-N11S-28-XX	30,5	21,7	45	50
100P2589O-N11S-34-XX	36,5	27,7	55	25
100P2589O-N11S-42-XX	44,5	35,5	60	25
100P2589O-N11H-13-XX	15,0	9,7	30	50
100P2589O-N11H-16-XX	17,8	11,5	35	50
100P2589O-N11H-21-XX	23,2	16,4	40	50
100P2589O-N11H-28-XX	30,5	21,5	50	50
100P2589O-N11H-34-XX	36,5	27,5	60	25
100P2589O-N11H-42-XX	44,5	35,3	65	25
100P2589O-PS-13-XX	15,0	9,5	35	50
100P2589O-PS-16-XX	17,8	11,3	45	50
100P2589O-PS-21-XX	23,2	16,0	60	50
100P2589O-PS-28-XX	30,5	21,3	70	50
100P2589O-PS-34-XX	36,5	27,2	75	50
100P2589O-PS-42-XX	44,5	34,2	90	25
100P2589O-PKS-13-XX	16,1	10,0	35	25 / 50
100P2589O-PKS-16-XX	19,2	11,7	45	25 / 50
100P2589O-PKS-21-XX	25,6	16,6	60	25 / 50
100P2589O-PKS-28-XX	32,0	21,7	65	25 / 50
100P2589O-PKS-34-XX	38,0	27,7	80	25 / 50

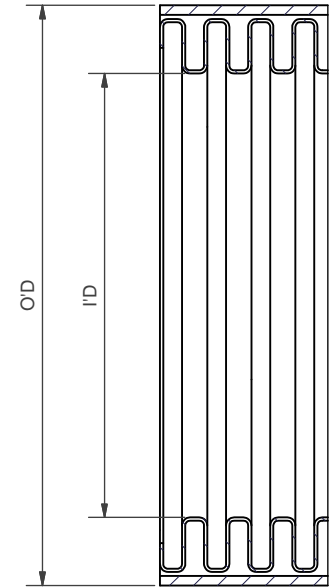
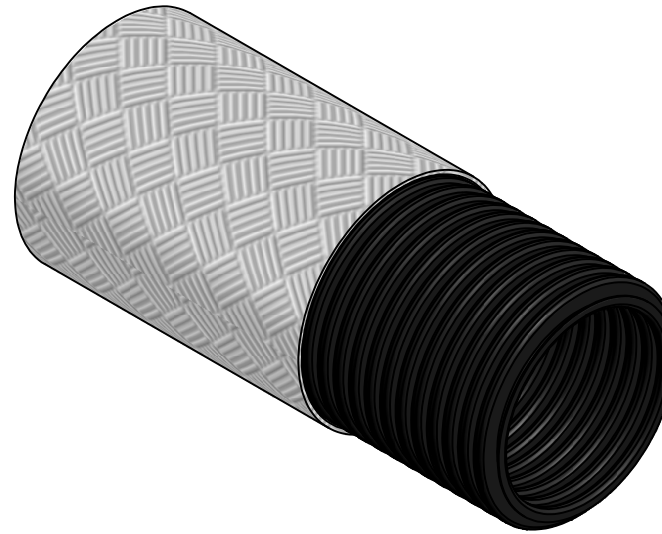


TABLE 2

CODE	WEIGHT	MATERIAL	TEMPERATURE RANGE - STATIC	TEMPERATURE RANGE - DYNAMIC	UV RESISTANCE	FLEXIBILITY	FATIGUE LIFE	FIRE PERFORMANCE
N6S	STANDARD	POLYAMIDE (NYLON) 6	-40°C / +120°C	-5°C / +120°C	VERY HIGH	HIGH	HIGH	LOW FIRE HAZARD
N11S	STANDARD	MODIFIED POLYAMIDE 11	-50°C / +110°C	-45°C / +120°C	VERY HIGH	VERY HIGH	VERY HIGH	SELF EXTINGUISHING HALOGEN FREE
N11H	HEAVY	MODIFIED POLYAMIDE 11	-50°C / +110°C	-45°C / +120°C	VERY HIGH	VERY HIGH	VERY HIGH	SELF EXTINGUISHING HALOGEN FREE
PS	STANDARD	POLYESTER	-50°C / +135°C	-25°C / +150°C	VERY HIGH	HIGH	HIGH	SELF EXT. HF, LOW SMOKE, VERY LOW TOXICITY
PKS	STANDARD	POLYKETONE (PEEK)	-60°C / +260°C	-45°C / +260°C	VERY HIGH	HIGH	HIGH	SUPER LOW FIRE HAZARD

CONTACT SALES OFFICE FOR PRODUCT APPROVALS
OTHER MATERIALS, SIZES & LENGTHS AVAILABLE

100P2589O-N11S-34-SS-25

SERIES
O - OVERBRAIDED CONFIGURATION
CONDUIT MATERIAL (SEE TABLE 2)
CONDUIT WEIGHT (S - STANDARD / H - HEAVY)
NOMINAL SIZE (SEE TABLE 1)
OVERBRAID TYPE (SS - STAINLESS STEEL /
TC - TINNED COPPER / NC - NICKEL PLATED COPPER)
REEL LENGTH (M) (TABLE 1)

100P25890 DATA SHEET
OVERBRAIDED NON-METALLIC CONDUIT
SUITABLE FOR USE WITH
POLAMCO KSFO SERIES
CONDUIT ADAPTOR

DRAWING NOT TO SCALE - DIMENSIONS IN MM

THIS DRAWING IS THE COPYRIGHT AND THE PROPERTY OF
POLAMCO LTD. IT MUST NOT BE COPIED, USED FOR
MANUFACTURE OR OTHERWISE DISCLOSED WITHOUT
WRITTEN CONSENT OF THE COMPANY

ISSUE
1
DATE
02/12/2009



POLAMCO LTD

WESTON LOCK
LOWER BRISTOL ROAD
BATH BA2 1EP